



Family Center Schedule

Horario del Centro de Familia



MONDAY LUNES

TUESDAY MARTES

WEDNESDAY MIÉRCOLES

THURSDAY JUEVES

FRIDAY VIERNES

SEE FAMILIES BY APPOINTMENTS ONLY.
SE ATIENDEN FAMILIAS CON CITA ÚNICAMENTE

INFORMATION
INFORMACIÓN
JOHANA SANTACRUZ
FAMILY LIAISON
ENLACE FAMILIAR

PHONE:
713 272 3220
EXT. 20519

JOHANA.SANTACRUZ@ALIEFISD.NET

REMIND:
81010
TEXT: @BUSHFC



8:30AM. – 8:45AM
COFFEE, NEWS AND CONVERSATION
CAFÉ, NOTICIAS Y CONVERSACIÓN

8:45AM – 10:00AM
ENGLISH LEVEL 1
INGLÉS NIVEL 1



10:15AM-10:45AM
TECHNOLOGY
TECNOLOGÍA

11:00AM – 12:00PM
JUMPSTART
(AT FULL CAPACITY)

12:00PM – 12:30PM
LUNCH TIME

12:30PM – 2:30PM
ONE ON ONE
VOLUNTEER TIME
AYUDA INDIVIDUAL
VOLUNTARIADO

8:30AM. – 8:45AM
COFFEE, NEWS AND CONVERSATION
CAFÉ, NOTICIAS Y CONVERSACIÓN

8:45AM – 10:00AM
ENGLISH LEVEL 1
INGLÉS NIVEL 1

10:15AM – 12:00PM
NUTRITION
NUTRICIÓN



12:00PM – 12:30PM
LUNCH TIME

12:30PM – 2:30PM
ONE ON ONE
VOLUNTEER TIME
AYUDA INDIVIDUAL
VOLUNTARIADO

8:30AM. – 8:45AM
COFFEE, NEWS AND CONVERSATION
CAFÉ, NOTICIAS Y CONVERSACIÓN

8:45AM – 9:45AM
ENGLISH LEVEL 1
INGLÉS NIVEL 1

9:45AM – 11:00AM
LEADERSHIP FOR FAMILIES
LIDERAZGO PARA FAMILIAS
11:00AM – 12:00PM
JUMPSTART
(AT FULL CAPACITY)



12:00PM – 12:30PM
LUNCH TIME

12:30PM – 2:30PM
ONE ON ONE
VOLUNTEER TIME
AYUDA INDIVIDUAL
VOLUNTARIADO

SEE FAMILIES BY APPOINTMENTS ONLY.

SE ATIENDEN FAMILIAS CON CITA ÚNICAMENTE.

SCHEDULE IS SUBJECT TO CHANGES FOR AP'S, FACE & SPEAKERS.

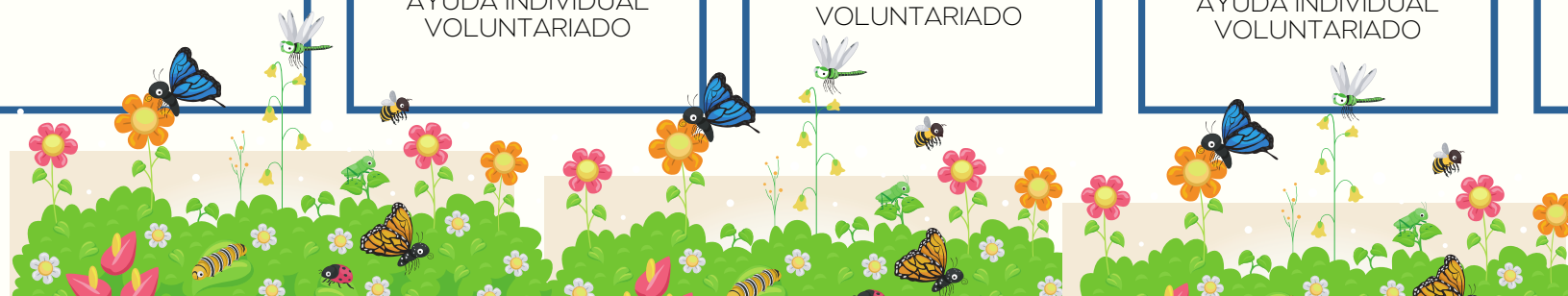
HORARIO SUJETO A CAMBIOS POR ADMINISTRADORES, FACE E INVITADOS.

CHAT-N-CHEW ONE PER SEMESTER WITH ADMINISTRATOR.

CAFÉ CON LOS ADMINISTRADORES UNO POR SEMESTRE.

GUEST SPEAKERS INFO. WILL BE SEND VIA REMIND.

SE ENVIARÁ INFORMACIÓN VIA REMIND PARA INVITADOS ESPECIALES



better together