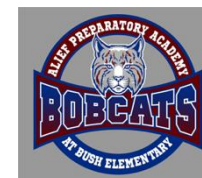


# BUSH

## FAMILY CENTER SCHEDULE HORARIO CENTRO DE FAMILIA



### MONDAY LUNES

See families by appointment only

Se atienden familias con cita únicamente

Chat- N-Chew One per semester with administrator

Café con los Administradores Uno por semestre



### TUESDAY MARTES

8:30am - 8:45am  
Coffee, News and Conversation  
Café, Noticias y Conversación

8:45am - 10:00am  
ESL Level Basic 1A  
Inglés Nivel Básico 1A

10:15am - 10:45am  
Let's Exercise  
Ejercitémonos

11:00am - 12:00am  
JumpStart  
(at full capacity)



12:00pm - 12:30pm  
Lunch time

12:30pm - 2:30pm  
One on One / Volunteer time  
Ayuda individual / Voluntariado

### WEDNESDAY MIÉRCOLES

8:30am - 8:45am  
Coffee, News and Conversation  
Café, Noticias y Conversación

8:45am - 10:00am  
ESL Level Basic 1A  
Inglés Nivel Básico 1A

10:15am - 12:00pm  
Nutrition / Nutrición

12:00pm - 12:30pm  
Lunch time

1:30pm - 2:30pm  
-Virtual - Active Parenting  
Padres Activos - Virtual  
ZOOM ID:

279 636 7203  
Passcode:  
77036

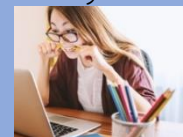


### THURSDAY JUEVES

8:30am - 8:45am  
Coffee, News and Conversation  
Café, Noticias y Conversación

8:45am - 10:00am  
ESL Level Basic 1A  
Inglés Nivel Básico 1A

10:15am - 11:00am  
Basic Technology / Tecnología Básica



11:15am - 12:00pm  
Academic connections/literacy  
Conexiones académicas - lectura-

12:00pm - 12:30pm  
Lunch time

12:30pm - 2:30pm  
One on One / Volunteer time  
Ayuda individual / Voluntariado

### FRIDAY VIERNES

See families by appointment only

Se atienden familias con cita únicamente

Schedule is subject to change for Principal, FACE & Speakers  
Horario sujeto a cambio por Director, FACE e Invitados

#### INFORMATION / INFORMACION

Johana Santacruz  
Family Liaison  
Enlace Familiar

•••  
Phone

713 272 3220  
Ext.20469

•••

Google Phone  
832 639 0542

•••

Johana.santacruz@aliefisd.net

•••

Remind  
81010

Text: @bushfc